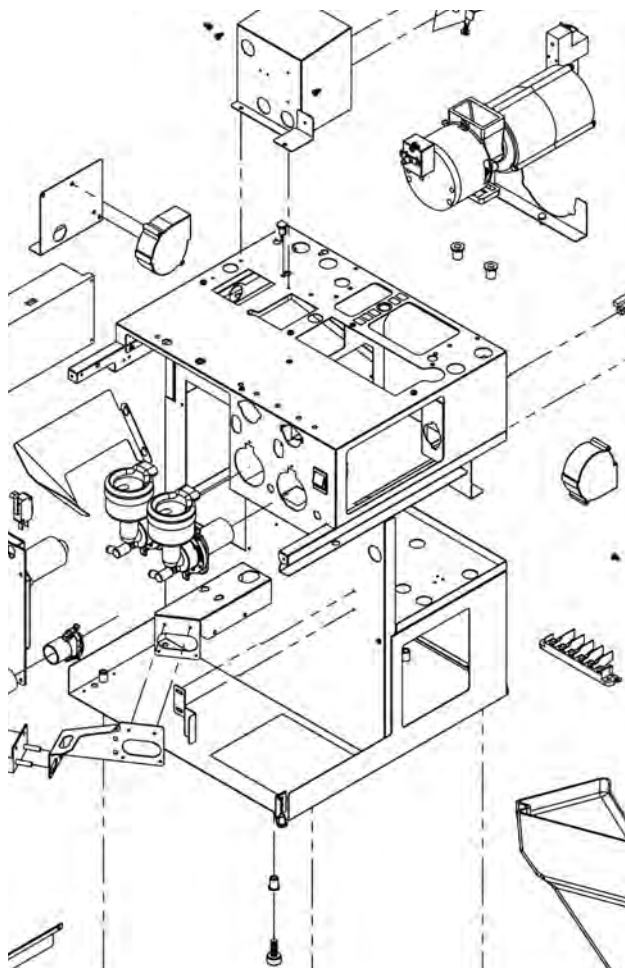


TECHNICAL MANUAL

CAFÉ ELITE



Your retail dealer

EN

Rev. 110202

1.	Contents	sid.	2
2.	General		3
3.	Overview User card		4
4.	Warning message shown in display		5 - 6
5.	Error code description		7
6.	Circuit diagram		8
6.	Circuit diagram UC and IO Pay card		9
7.	Spare part list		10-11
8.	Exploded view		12 - 16
9.	Dimension sketch		17
10.	Serviceintervals		18

Function description:

Café Elite has three nozzles, one for hot water and two for a choice of other drinks. Café Elite has eight buttons, one of which is generally reserved for hot water only and the others are programmable for dispensing a choice of other drinks.

Café Elite can be programmed to dispense a set volume or for continuous flow from any dispenser nozzle or self-closing faucet.

First start up

Turn ON the main switch behind the door, display will show: "water level low" "Press Enter"

Press the E button to confirm.

Energy Saving Mode:

Hold the stop button for 5 seconds. Display will show standby.

When the machine goes into standby mode, drinks cannot be dispensed and the water temperature falls to the block ambient temperature.

To return to operation mode, press the stop button for 5 seconds.

Fact:

Height 735 mm

Width 310 mm

Depth 515 mm

Electrical connection. 1-phase 230V/2200W

Cold water connection: ½" Radius external thread

Ambient temperatures for correct operation +5°C - +50°C

Note: All options must be connected and installed by a qualified electrician.

3 Canisters

Canister:	Width	Depth	Height	volume/litre;
coffee	137	225	335	2,7
chocolate	67	225	335	2,7
topping	67	225	335	2,7

4 Canisters

Canister:	Width	Depth	Height	volume/litre;
coffee	67	225	335	2,7
espresso	67	225	335	2,7
chocolate	67	225	335	2,7
topping	67	225	335	2,7

TECHNICAL SERVICE CARD.

(TECHNICAL SERVICE CARD) Item number: 1602693.is used for adjusting drinks and counters.

The user card is supplied by your dealer.

Insert the user card, according to the illustration.



The display will show the Service Menu, Counters and you can now browse forwards through the menu.

**Service Menu
Counters**

To use the machine again. Remove the card and keep it in a safe place.

Message on display:

Display shows

Hardware Error:	Hardware error
Not available	Drink cannot be selected as pot.
Heating Water Please Wait...	Low temperature in the water tank, the machine is heating up (blocked)
Low Water Level Press Enter Key	Low water level in water tank.
Filling Water Please wait	The machine is filling water.
Select drink	
Temperature	Shows actual temp. in water tank
Strength	+ / - to increase concentrate
Jug Mode	
Energy saving mode	Machine is in Energy saving mode
Warning Low Temperature	The temperature is low, it is still possible to dispense drink.
Low Temperature Blocked	The temperature is low, the machine is blocked.
Empty Drip Tray	The drip tray is full of water
Overcurrent	Overcurrent

Message on display:

Display shows

Error: Water Supply	The water has not reached the correct level in the water tank. Check the water tap, restart the machine.
Error: Water level pins	Check the level sensor, cable failure, level pins connected incorrect
Place Cup	If the cup sensor has been activated, this is shown if no cup has been placed on the drip tray.
Bev. Disabled	The drink has been disabled
Please wait	Shows when drink dispenses
Door open	
Error: Temp.sensor	Tempsensor damaged, faults in cables
Error: Check Heater	Solid state defect, heater defect. Output I/O card is defect.

Felkodsbeskrivning:**Error code description:****Overcurrent**

Group 1:2 = Other components (Fan, Valves, Relays Etc..) (1,5A limit)

Group 1:3 = Mixer 1 (3,5A limit)

Group 1:5 = Mixer 2 (3,5A limit)

Message is shown if one of the software fuses have been triggered. Caused by a component using too much current (A). You can run each component in the "Hardware Test" menu and the message will show when you turn on the component that is using too much current.

ERROR: Water Supply

Message will show if the inlet valve has been open for more than 3 minutes and the machine still have not acquired correct water level

Action: Check that the water to the machine is turned on, Check the levelsensor, test function of the inlet valve in "Hardware Test"

ERROR: Tempsensor

Message will show if the NTC sensor is broken or is out of range of its resistance curve, also if cables have loosened from its connectors.

Action: Replace NTC sensor, check cable connection on the NTC and PCB board.

ERROR: Levelpins

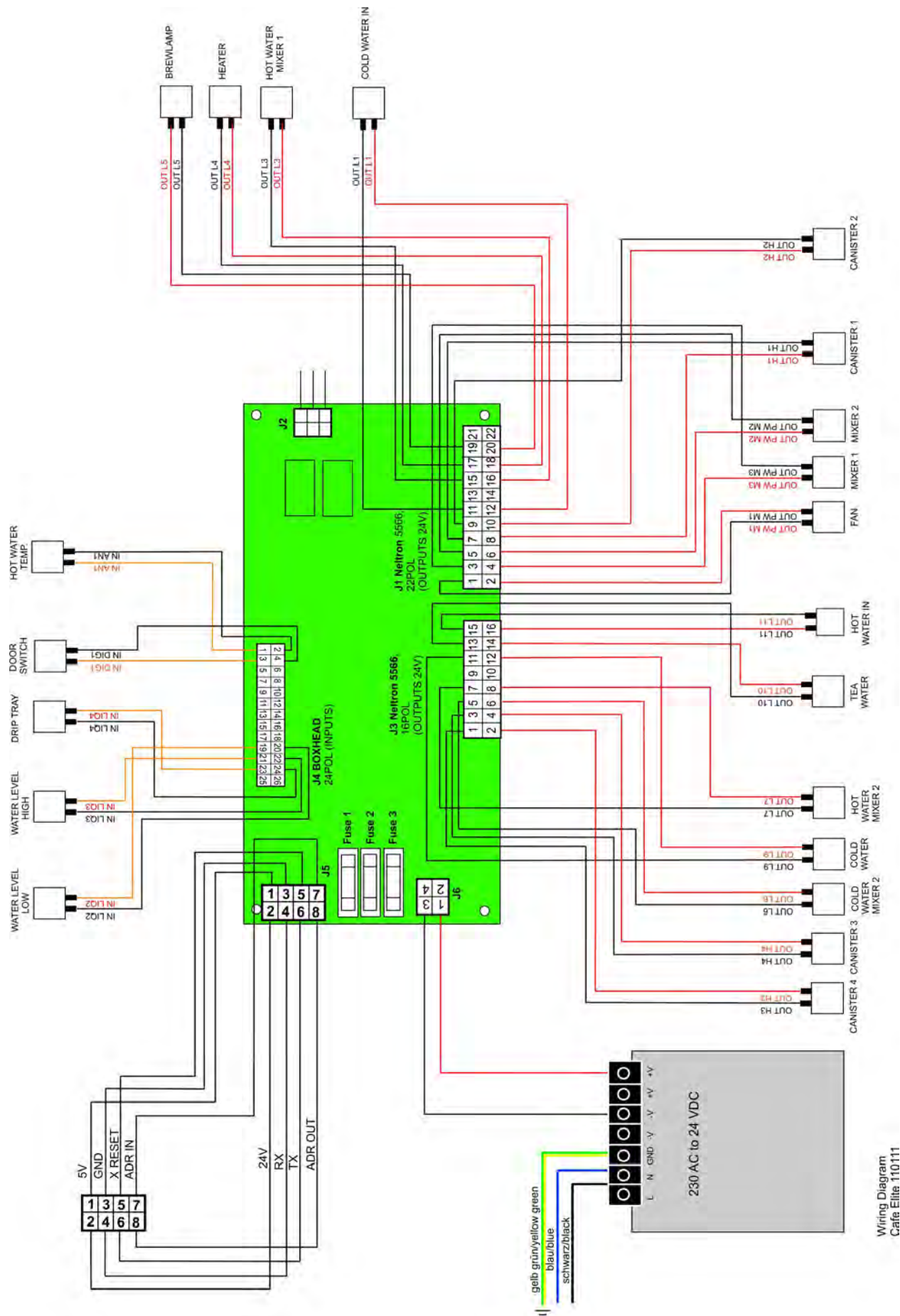
Message will show if the cables to the water level high & low have been connected to the wrong levelpin.

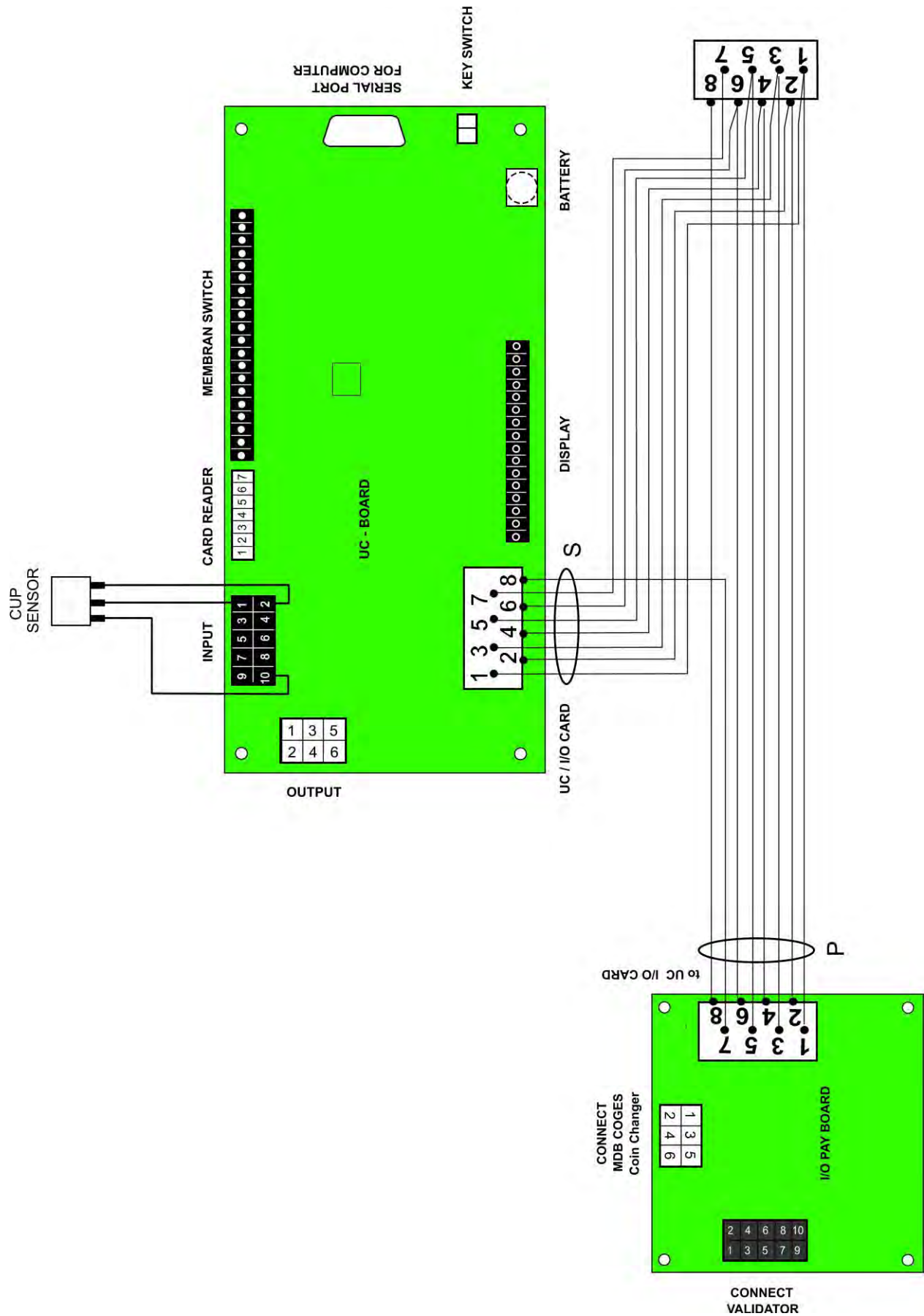
Action: Swap cables to the levelsensor

ERROR: Check Heater

Message will show if the machine have not reached working temperature within 14 minutes from startup.

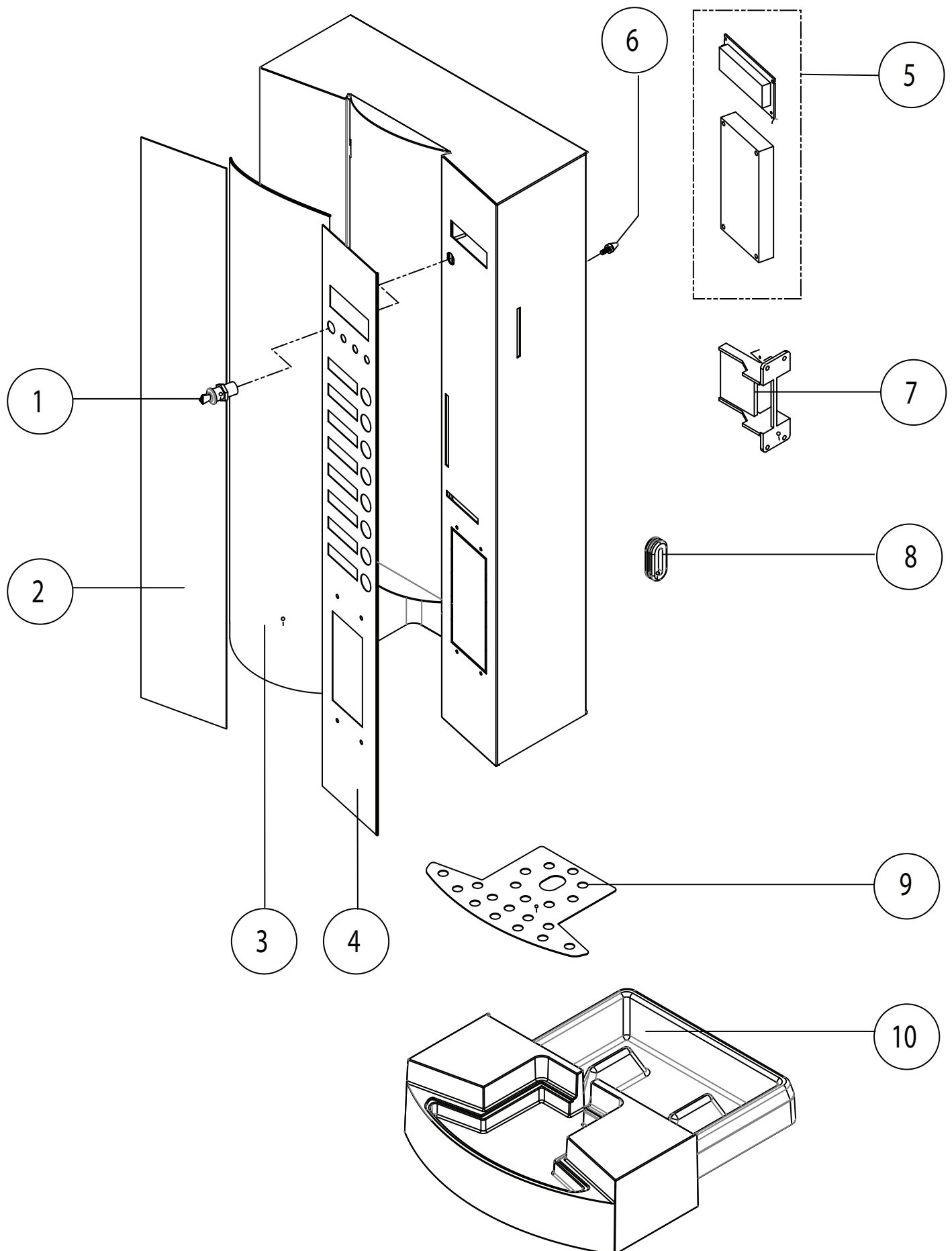
Action: Check Overheating protection, cables to the element, solid state relay, signal from IO-board to solid state when you know the machine should heat, you can also force the element to run in "Hardware Test".

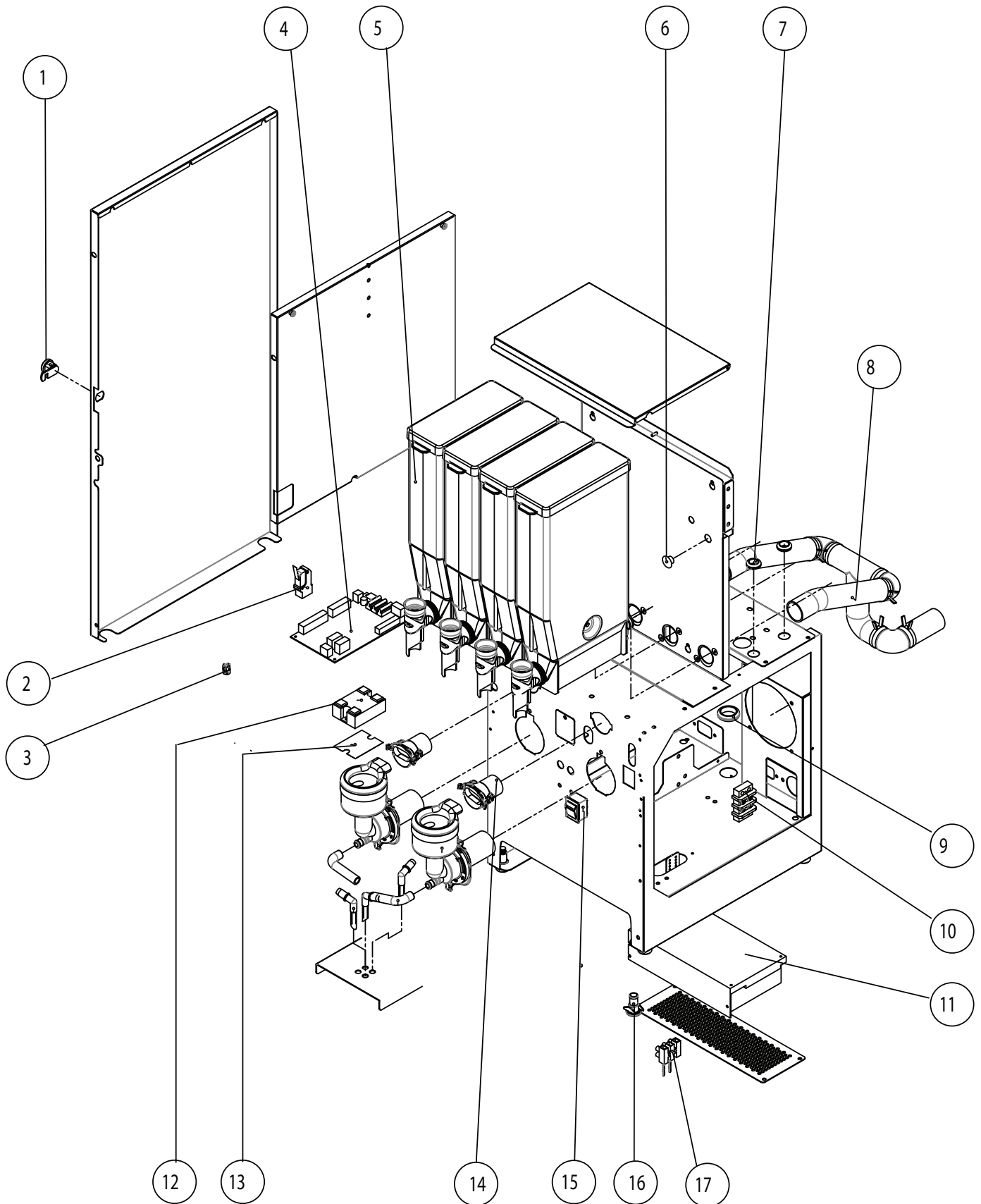


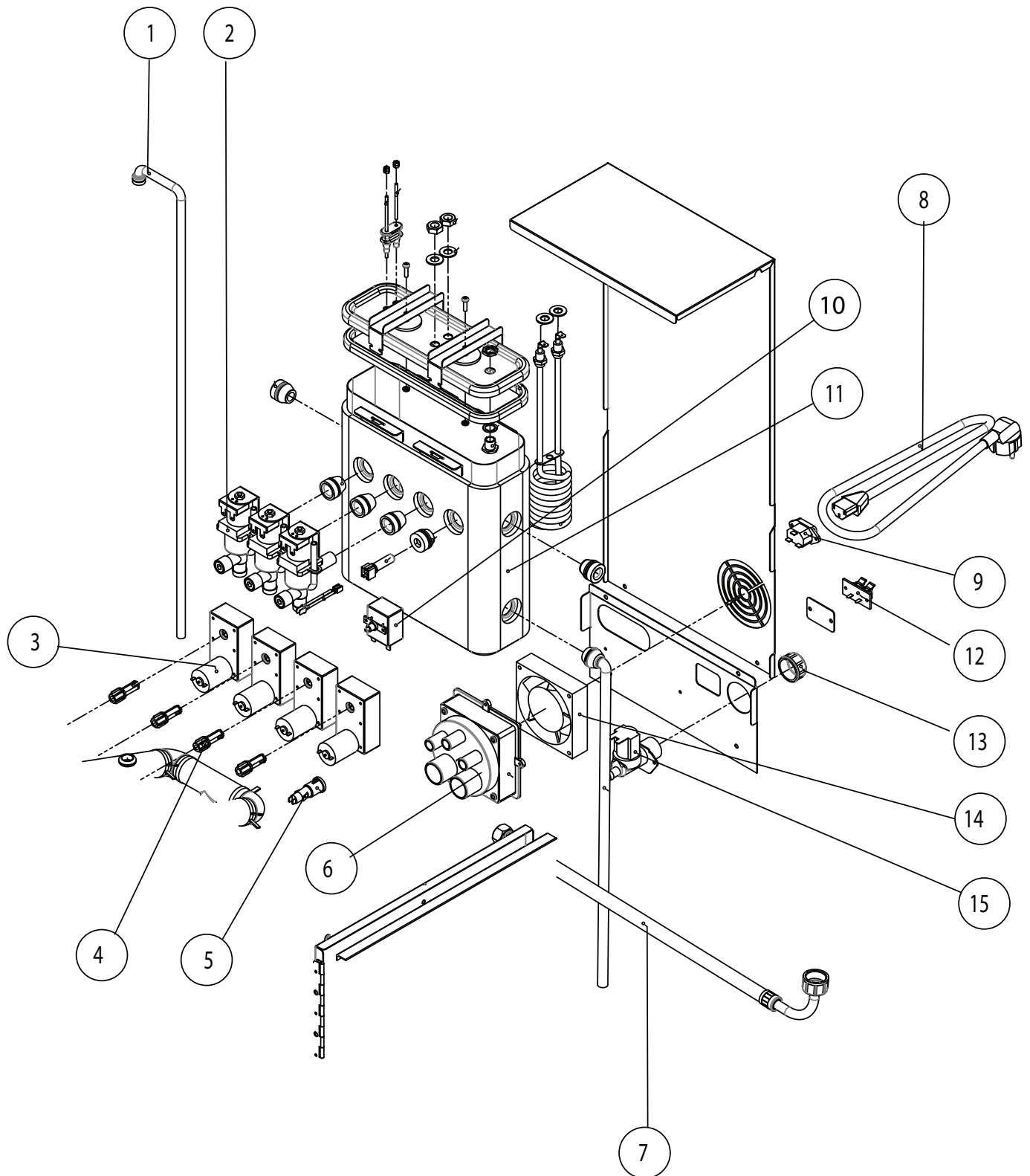


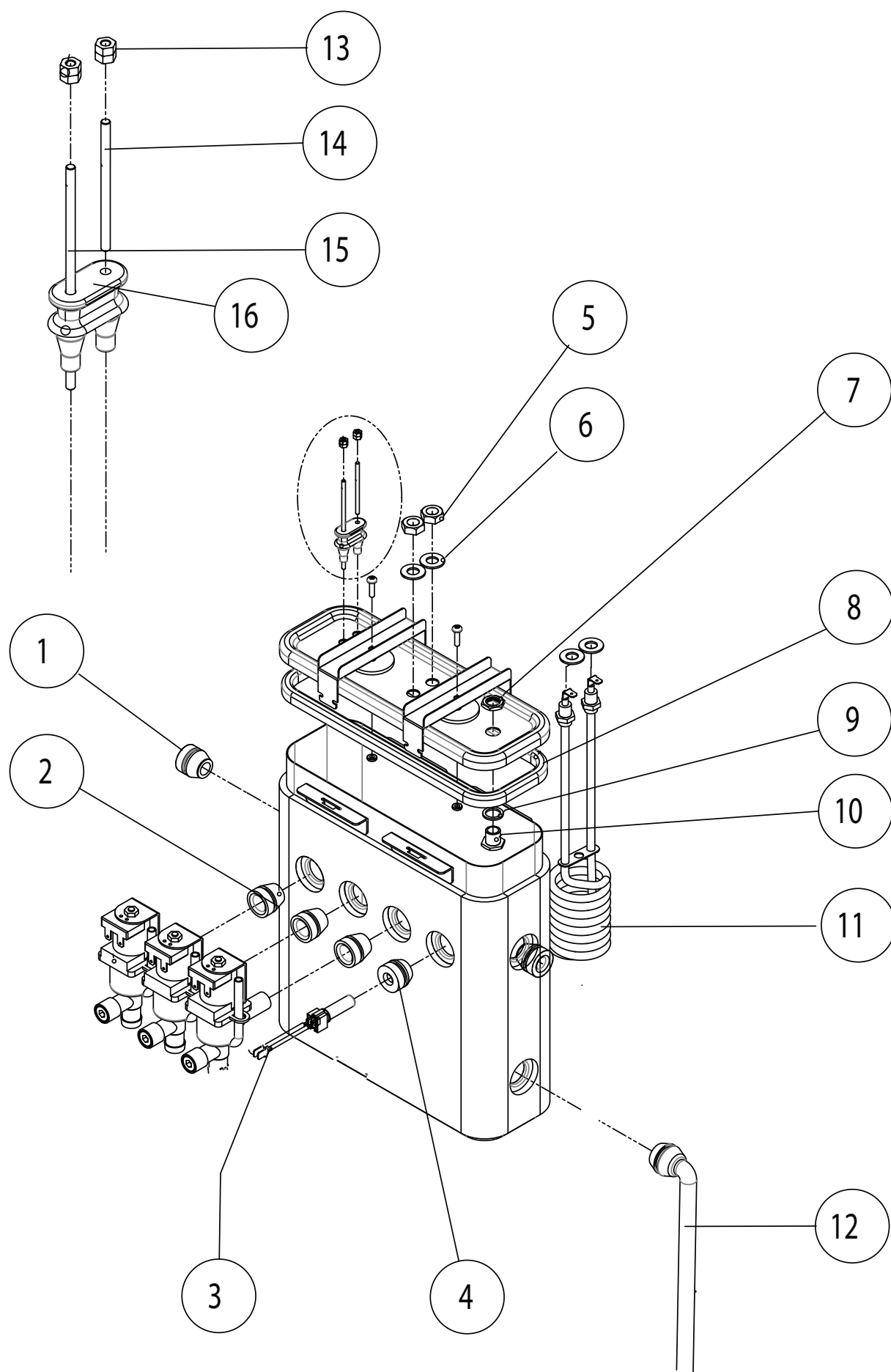
Pos.	Amount/unit	Article . no.	Description
Valid for page 12 Door			
1	1	1202551	Key switch
2	1	1665009	Left Overlay
3	1	1665002	Middle Printing Film
4	1	1665001	Membrane Switch
5	1	1604112	Display Board complete
6	1	180115	guide pin, Door
7	1	1602697	Card Reader
8	1	1605401	Grommet
9	1	260067-02	Spill Grid
10	1	1264007	Drip Tray Cafe Elite Black
Valid for page 13 Machine 1			
1	1	120250	Key Lock
2	1	160841	Microswitch Instant
3	1	1206123	Non Return Valve complete
4	1	1604111	Main PCB
5	4	1205626	Canister W67 H350
6	1	1505076	Rubber Plug,10mm
7	2	120465	Rubber TPG 20.5
8	1	NA 01	Air Flow Pipe
9	1	160536	Rubber Trp 30.0 Shore45
10	1	1602414	Terminal Block for 4mm" Wire
11	1	1031652	Power Supply 150W
12	1	1604203	Solid State 25A
13	1	1206581	Seal Solid State
14	2	1604836	Hose Adapter for Mixing System
15	1	160801	Rocket switch single orange
16	1	120498	Bulkhead Adaptor
17	1	1205500	Spring Level Sensor
Valid for page 14 Machine 2			
1	1	1561015	Over Flow Pipe
2	3	1206289	Outlet Valve Deltrol 24VDC
3	4	1604612	Motor gear 145rpm
4	4	1604614	Drive Shaft 16mm
5	1	1604351	Fuse Assembly
-	1	1604381	Fuse 4 Amp (slow 5x20)
6	1	1604173	Fan Connection Complete Black
7	1	1505042	Inlet hose with connect
8	1	160565	Power Cord European
9	1	160570	Power Socket
10	1	220220	High limit Switch
11	1	260141	Water tank 5L Assy deep draw
12	1	160841	Microswitch Instant
13	1	1403401	Inlet Valve Plug with Silicon Seal White
14	1	1604171	Fan 24VDC
15	1	1206371	Single Valve 2.5L 24VDC

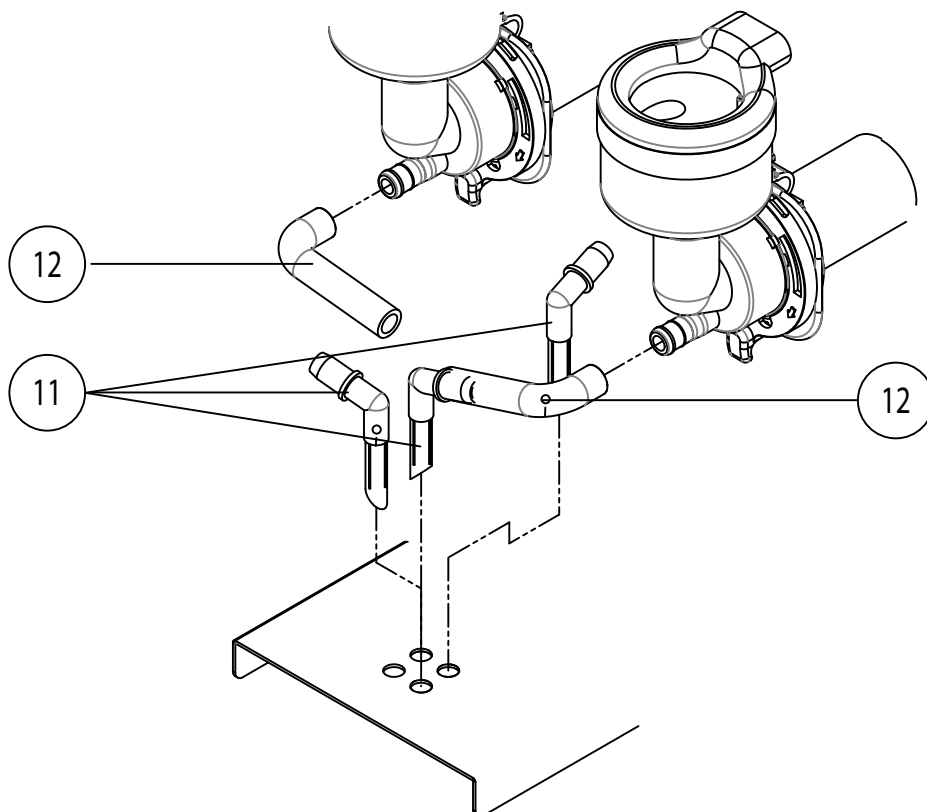
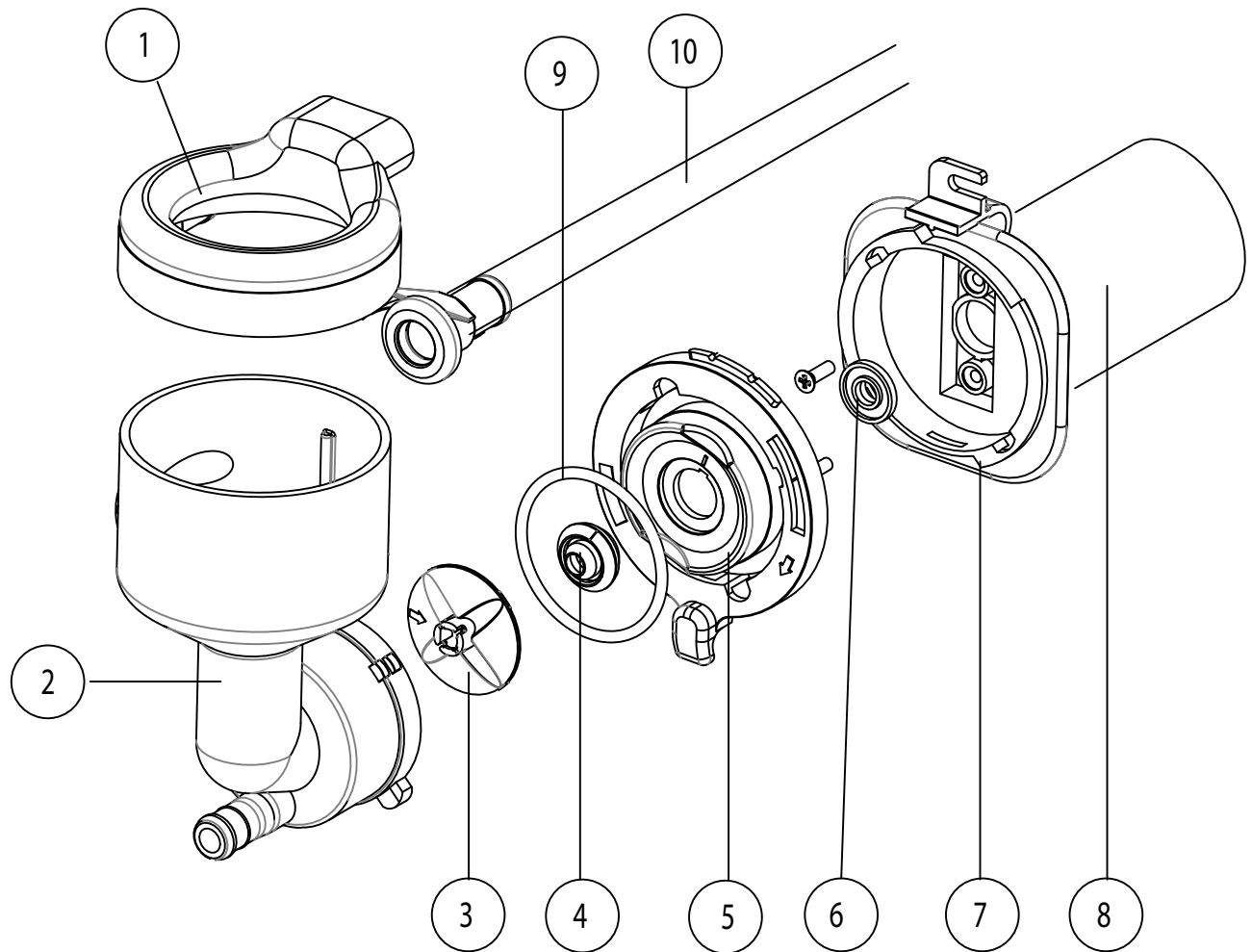
Pos.	Amount/unit	Article . no.	Description
Valid for page 15			Tank
1	2	160538	Plug for water outlet
2	3	1561010	Seal for Outlet Valve
3	1	711000	NTC thermistor complete
4	1	1605361	Seal for NTC
5	2	NA	Nut M10
6	4	1403101	Plain Washer
7	1	NA	Hex thin nuts for high limit switch
8	1	1561012	Seal gasket deep draw rectange tank
9	1	1206505	Gasket for HL switch !ber 16.8*12.4
10	1	NA	Screw & nut for high limit swtich
11	1	1601311	Element 2200W/230V with SS Nuts
12	1	1561014	Inlet pipe Deep Draw rectang tank
13	4	1401101	M3 Nut
14	1	1205302	Sensor Short 55mm
15	1	1205301	Sensor Long 90 mm
16	1	1605362	Double Seal Level Sensor
Valid for page 16			Mixing system and outlet
1	2	1206704	Mixing bowl
2	2	1206707	Steam trap
3	2	1206703	Whipper
4	2	120655-02	Grommet for whipper pin
5	2	1206702	Mounting plate
6	2	1604804	Slinger disc
7	2	1206701	Motor whipper plate
8	2	1604591	Whipper motor 24V
9	2	120638	O-ring
10	2	150501	Silicone hose (sales by metre)
Outlet			
11	3	1201411	Angle of outlet
12	2	1031501	Tube empire

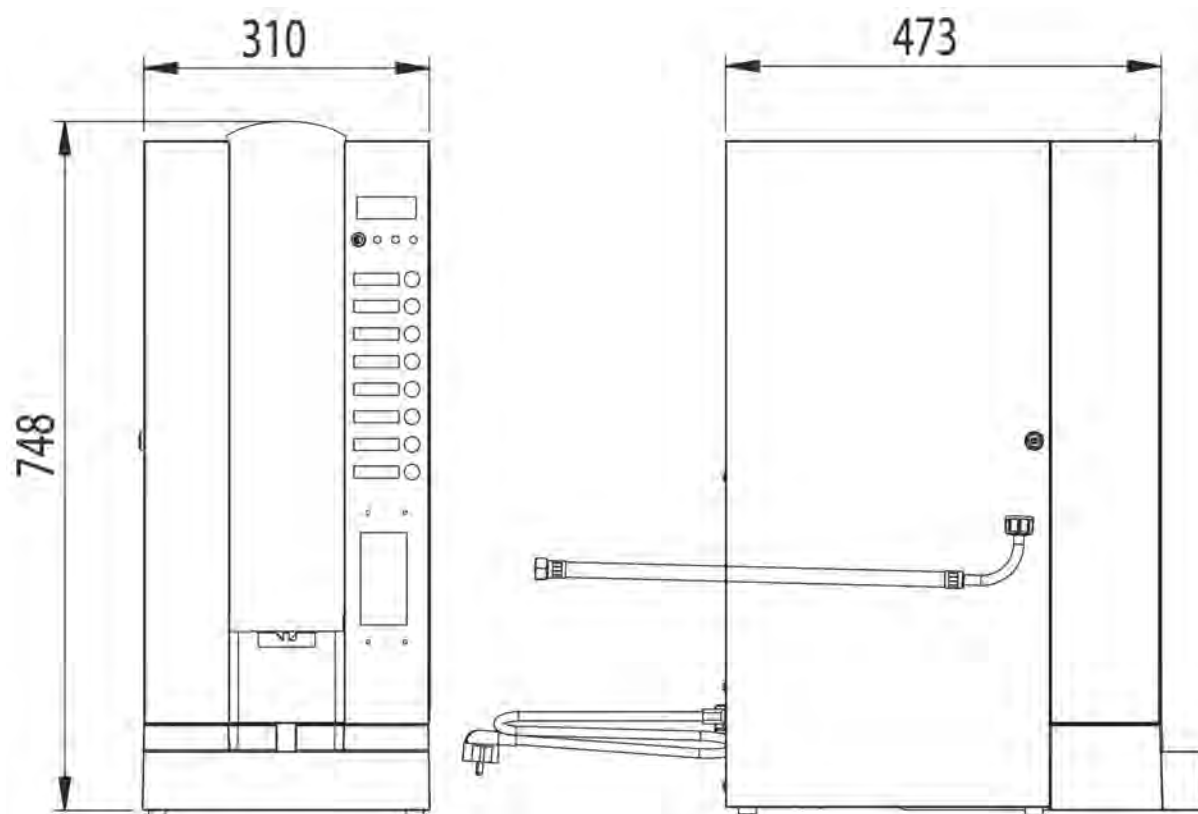












Serviceintervals - Empire/Elite

MAIN COMPONENTS			MONTHS			
PARTS	ARTICLE NO	3	6	9	12	
BOILER						
Outlet valve	Membrane	1501191		CHECK		REPLACE
	Sealing	160537-03		CHECK		REPLACE
Levelsensor	Levelpins	1205302		CLEAN		CLEAN
		1205301		CLEAN		CLEAN
NTC	Sensor	711000		CHECK		CHECK
	Sealing	1605361		CHECK		CHECK
Mixer						
Whipper		1206703		CHECK		REPLACE
Mountingplate	O-ring	120638		CHECK		REPLACE
	Sealing	120655-02		CHECK		REPLACE
Ventilation						
Fan		1604171		CHECK		CHECK

CAFÈ ELITE



FOR SERVICE

Please contact your retail dealer

Your retail dealer

.....
.....
.....

CREM International AB
Box 10, Viksgränd 2, SE-670 40 Åmotfors, Sweden
Tel: +46 (0)570-477 00, Fax: +46 (0)570-47719
E-mail: info.se@creminternational.com www.creminternational.com

Art. nr/Art. no.1740069